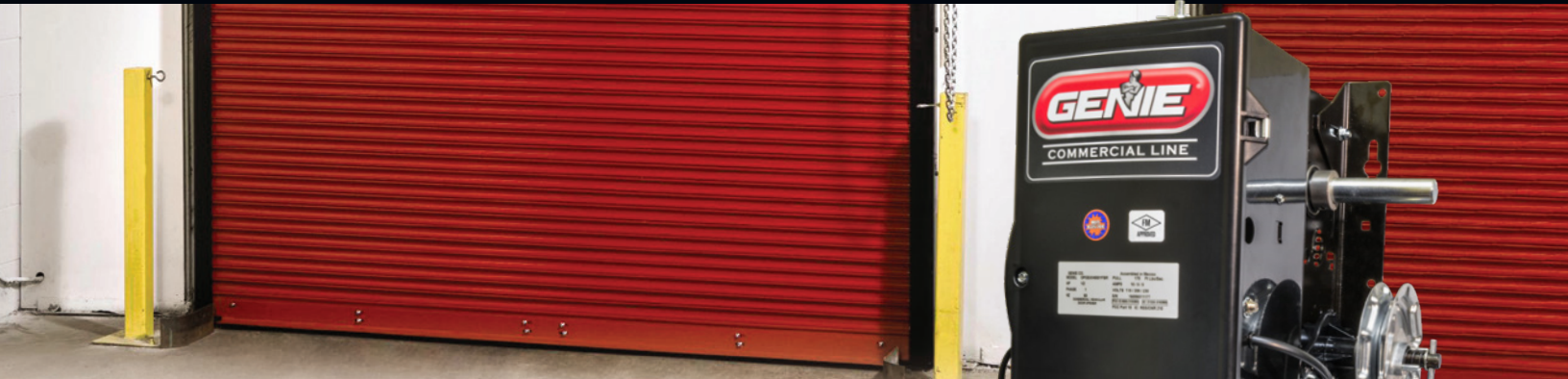


GCL-H FIRE DOOR OPERATOR

STANDARD-DUTY HOIST



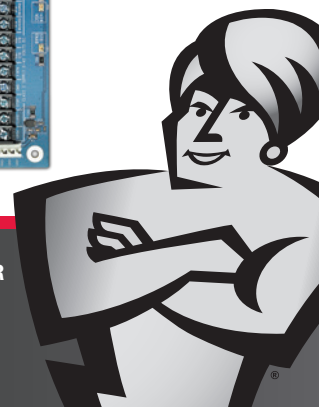
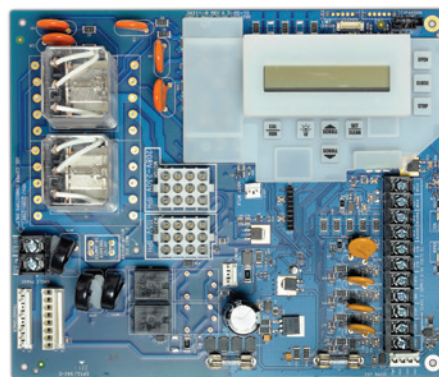
The GCL-H fire door operator is designed for rolling fire doors that have up to a 30-cycle/hour and less than a 100-cycle/day requirement. Advanced features and robust mechanical design combine to provide the next evolution in fire door operators.

GCL-H Fire Door Operator Advantages

- Floor level auto-reset. No manual intervention is required to reset fire door operator after a fire alarm or drop test. Upon reset of the fire alarm signal and test key switch, the fire door may be motor operated normally.
- 24-hour battery backup provides extra protection in the event of a power loss.
- Configuration settings for automatic door opening after reset of the test key switch.
- User-configured time delay after an alarm or test signal before activation of door drop.
- Sash chain release ready for jurisdictions that require a fusible link.
- Intuitive configuration and troubleshooting of fire door and standard door functions through the built-in LCD display.
- Operator comes with a horn strobe and test key switch, eliminating need to purchase these items separately.
- MultiVolt® - Order phase specific operator for the job and have the ability to select the right voltage on the job site.
 - Single Phase: 115/208/230 VAC
 - Three Phase: 208/230/460 VAC
 - Three Phase: 575 VAC
- Modular design with optional expansion boards for advanced timer to close, or auxiliary output functionality.
- LCD display with intuitive setup menu. Provides real-time status and trouble-shooting assistance.
- EZ Limit® provides for push-to-set limits that remain synchronized with door even during long term loss of power and after activation of fire door drop.
- TensiBelt® primary drive reduction eliminates need to adjust belt tension.
- Open/close/stop and setup keys included on control board. Keeps all controls used for setup conveniently near the LCD display.
- Allows for monitored entrapment protection and momentary operation when used with select edge-sensing devices. See back page for approved list of monitored devices.

Standard Features

- Fire door operator module to control door release.
- EZ Limit® electro-mechanical limits.
- Adjustable timed close feature.
- MultiVolt® voltage simplification.
- Governor controlled door descent.
- Maximum run timer automatically adjusts to up and down run time.
- TensiBelt® primary reduction.
- Delay on reverse.
- 16-character LCD display.
- UL Listed and FM Approved.
- Advanced radio receiver displays and stores activation by transmitter ID number on the LCD display.
- 3-button control station.
- 2-year/20,000-cycle warranty.



For more information on patents related to this product, visit <https://www.geniecompany.com/patents>.

©2025 THE GENIE COMPANY | GCL-H FIRE DOOR OPERATOR



OFFICIAL GARAGE DOOR
OPENER
of the
Pro Football Hall of Fame

GCL-H FIRE DOOR OPERATOR | STANDARD-DUTY HOIST

MAX DOOR SIZE (SQ*FT) - ROLLING

HP / Voltage	Door Model Slat Profile	700 Series Non-Insulated						700C Series Insulated		
		Curved No. 2 / Flat No. 17		Curved no. 4 / Flat No. 14				Flat No. 34		
	Gauge	22GA.	20GA.	22GA.	20GA.	18GA.	16GA.	22GA.	20GA.	18GA.
1/2 HP	Max. Sq. Ft.	100	100	100	81	81	64	64	49	49
1 HP	Max. Sq. Ft.	144	144	121	100	100	81	81	64	64
3 HP	Max. Sq. Ft.	196	196	169	144	121	121	100	100	100

*This chart is a general guideline to help with the quoting process to minimize errors. Rolling Fire Door is a highly complex and configured product. Consult factory for accuracy specifying operator horsepower, door height, door width, and slat type requirements. GCL-H is UL Listed.

Construction

- Motor**
 AC continuous-duty motor. Motor replaceable without changing limits. Thermally protected.
- Drive**
 Primary — TensiBelt® auto tensioning poly-V J belt.
 Secondary — chain and sprocket reduction.
- Brake**
 24 VDC disc brake standard.
- Friction Clutch**
 Adjustable clutch to help protect against door and operator damage.
- Precision Radial Ball Bearings**
 Included in critical areas throughout the powertrain.
- Emergency Hoist Manual Operation**
 Electrically interlocked manual hoist with floor level disconnect.
- Pre-wired to accept:**
 - Monitored entrapment sensing edge.
 - Single or 3-button control stations.

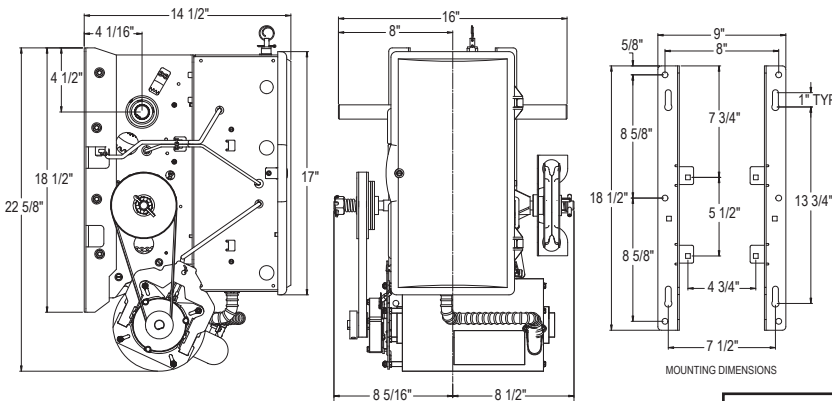
Accessories and Options

- Timer Close Module***
 Timed close set via the LCD display from 2 seconds up to 5 minutes. Includes pre-close warning contacts, timer hold input, auxiliary open input, normally closed safety input, and monitored edge input.
- Auxiliary Output Module***
 Provides relay contacts at the open, close, and mid-stop limits. Contacts for 5-minute lamp, and "ADA" contacts set via LCD display to warn during opening, closing or both.
- Edge Sensing Module**
 Input allows connection of a T3 monitored safety edge. When advanced timer close features are required, use the Timer Close Module.
- Intellicode® Transmitters**
 Available in single up to four button, or open/close/stop models.
- UL325 Listed Reversing Devices**
 The installation of a monitored external entrapment device is required for momentary contact close operation on all commercial door operators. Only the following devices, when purchased through Genie, are UL Approved for use to meet this requirement:
 - MillerEdge ME/MT/CPT (DC or T3) 2-wire edge sensor. Must be used with TCM (OPABTCGX.S) or Interface Module (OPAKMEIGX.S).
- Notification Devices**
 Light, horn and horn/strobe for audible and visual signaling of alarm condition. One horn/strobe device included with the GCL-H Fire Door Operator.
- Detection Devices**
 Heat detectors and heat/smoke detectors available for detecting alarm conditions.

*Only one auxiliary module can be added to the GCL-H Fire Door Operator

AMPERAGE RATING - 60Hz

HP	115V 1PH	208V 1PH	230V 1PH	208V 3PH	230V 3PH	460V 3PH	575V 3PH
1/2	10	5	5	3	3	3	2
3/4	11	6	6	3	4	3	2
1	14	7	7	4	4	3	2



YOUR GENIE PROFESSIONAL DEALER:



The Genie Company, One Door Drive, Mt. Hope, Ohio 44660
www.geniecompany.com/commercial | 1.800.843.4084

Item G001.0271 Rev. 12/24

© 2025 The Genie Company. Genie, Safe-T-Beam, Intellicode and the Genie logo, are registered trademarks of GMI Holdings, Inc., d/b/a The Genie Company. Consistent with our policy of continuing product improvement, we reserve the right to change product specifications without notice or obligation.